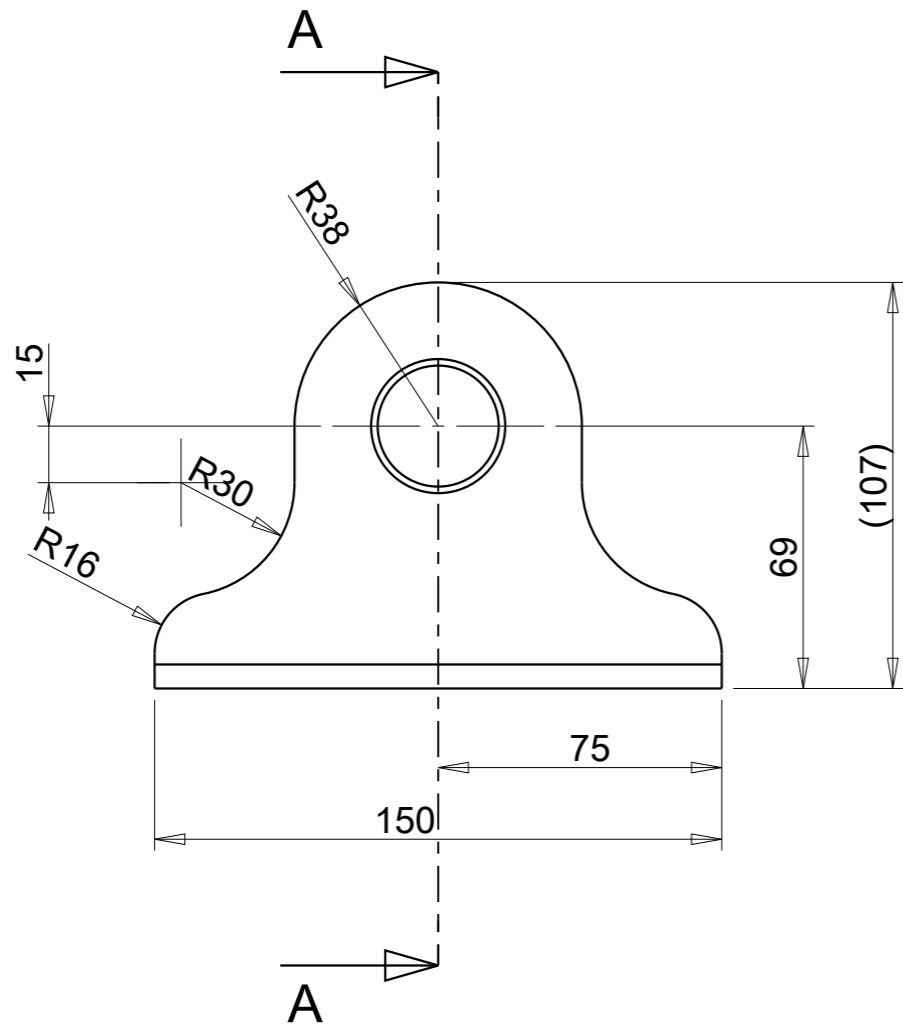
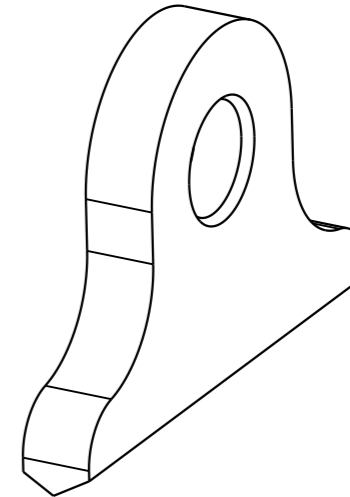
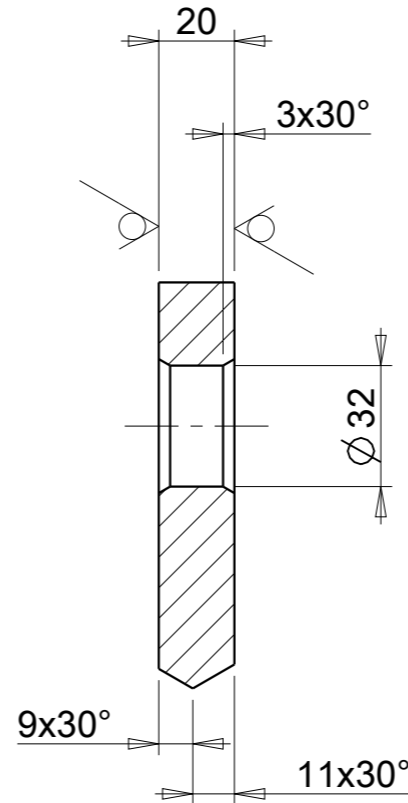


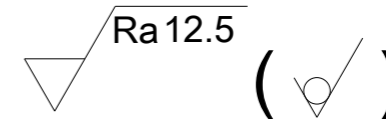
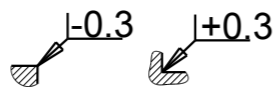
Reproduction, dissemination or use of this document or its all contents in any form without the prior written permission of TUVASAS, is prohibited. Offenders will be liable for the payment of damages. All rights reserved in the event of the grant of a patent, utility model or ornamental design registration.



SECTION A-A



Edge without dimension according to DIN ISO 13715



STEEL SHEETS NOTES:

Thermal cutting - Classification of thermal cuts -
Geometrical product specification and quality tolerances
According to EN ISO 9013 - 231

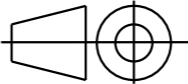
Hot-rolled steel plates 3 mm thick or above -
Tolerances on dimensions and shape
According to EN10029 - B

TS 12708 Steel Casting	<1000	6,0	0,8
	<630	4,0	0,7
	<400	3,0	0,6
	<250	3,0	0,4
	100	2,0	0,3
	40	1,5	0,2
	L mm	Raw	Form
Nom. Size	Class		

ISO 2768 General Tolerance	<4000	2,0	0,4
	<2000	1,2	0,4
	<1000	0,8	0,3
	<400	0,5	0,3
	30-120	0,3	0,2
	2-30	0,2	0,1
	L mm	m ±	K ±
Nom. Size	Class		

ISO 13920 Welded Construction	>20000	9,0	8,0
	<20000	8,0	7,0
	<16000	7,0	6,0
	<12000	6,0	5,0
	<8000	5,0	4,0
	<4000	4,0	3,0
	<2000	3,0	2,0
	<1000	2,0	1,5
	<400	1,0	1,0
	30-120	1,0	0,5
	2-30	1,0	0,5
	L mm	A ±	E ±
Nom. Size	Class		

Technical Specifications	-					
Technical Document	-					
Fixture/Mould Asset ID.	-					
Coating/Heat Tre./Roughness	-					
Paint/Color	-	Modf.No	Modification Description	Date	Sign	

				S355J2 EN 10025		1.3
No	Parça Adý Designation Name of Item	Adet Qty.	Resim No / Norm Drawing No / Norm	Malzeme Material	Ölçü Dimension	Ağırlık Weight (Kg)
TYP	ISO 1302 ISO 8015 EN 22553			General Tol.	ISO 2768	f <input type="checkbox"/> m <input checked="" type="checkbox"/> H <input type="checkbox"/> K <input checked="" type="checkbox"/>
	EN 15085-2 Certification Level		CL1 <input type="checkbox"/> CL2 <input type="checkbox"/> CL3 <input type="checkbox"/> CL4 <input type="checkbox"/>	Weld Prod.	ISO 13920	A <input checked="" type="checkbox"/> B <input type="checkbox"/> E <input checked="" type="checkbox"/> F <input type="checkbox"/>
				Cast Steel	ISO 12708	Lm2 <input type="checkbox"/> Lr2 <input type="checkbox"/> Sm2 <input type="checkbox"/> Sr2 <input type="checkbox"/>
	Approved	P.FARINA		Scale	<div>TUVASAS</div> <div>Turkish Wagon Industry</div>	
	Checked	M.BORLO		1:2		
	Prepared	D.CARLINO				
			LIFTING SUPPORT		EM20.24.03.61000	
Date:18/04/2019				Sheet:1/1	Size:A3	Rev:00